

CONNECT

*Dublin*

BRIDGING COMMUNITIES,  
SHAPING FUTURES

MULTIMODAL AND STREETScape PLAN

FY2024 RAISE Grant Application

Funding Opportunity Number: DTOS59-24-RA-RAISE

City of Dublin, Georgia



# TABLE OF CONTENTS



<b>01   PROJECT DESCRIPTION</b>	<b>3</b>
PROJECT SCOPE	3
PROJECT HISTORY	5
PROJECT LOCATION	6
<b>02   PROJECT BUDGET</b>	<b>7</b>
PROJECT FUNDING	8
DISADVANTAGED CENSUS TRACTS	10
URBAN/RURAL	10
<b>03   MERIT CRITERIA</b>	<b>11</b>
SAFETY	11
ENVIRONMENTAL SUSTAINABILITY	12
QUALITY OF LIFE	14
MOBILITY AND COMMUNITY CONNECTIVITY	15
ECONOMIC COMPETITIVENESS AND OPPORTUNITY	16
STATE OF GOOD REPAIR	17
PARTNERSHIP AND COLLABORATION	18
INNOVATION	19
<b>04   PROJECT READINESS</b>	<b>21</b>
TECHNICAL CAPACITY ASSESSMENT	21
PROJECT SCHEDULE	25

The City of Dublin, Georgia requests \$1,500,000 in FY 2024 RAISE Planning Grant funds for the planning phase of Connect Dublin: Bridging Communities, Shaping Futures, an innovative transportation initiative to reconnect and redevelop the city's most vulnerable neighborhoods. Through the planning phase of Connect Dublin, the City of Dublin will set out to transform its historic core and adjacent neighborhoods, linking the downtown area, the Oconee River, and underserved communities with a network of equitable and catalytic streetscape and multimodal paths.

The goal of Connect Dublin is clear: to revitalize economically distressed neighborhoods by planning and implementing over 13.5 miles of multimodal and streetscape improvements designed to facilitate safe access to essential services, recreation, civic destinations, and community resources, creating a harmonious connection between disparate parts of the city, breaking down barriers of isolation and fostering a sense of unity.

At the heart of Connect Dublin lies a commitment to reducing reliance on individual cars and promoting sustainability. Through the creation of "improvement corridors" in areas like Scottsville, Southside, and Stubbs, this initiative will provide essential infrastructure and amenities to historically underserved neighborhoods. The level of improvements will be tailored to each corridor's unique needs, ensuring that every resident benefits from enhanced connectivity through active mobility.

Connect Dublin places a strong emphasis on pedestrian safety, incorporating intersection improvements to ensure safer crossings. By addressing the challenges faced by pedestrians, Connect Dublin will create a city where everyone feels secure and empowered to explore and traverse the urban environment. Beyond physical improvements, Connect Dublin aspires to foster social connectivity and economic prosperity. By reshaping the urban landscape, the project aligns with the City of Dublin's broader initiatives, creating a holistic approach to community development that goes beyond infrastructure enhancements.

As Connect Dublin unfolds, it becomes more than just a physical transformation; it emerges as a beacon of hope, resilience, and shared progress. Through collaboration, vision, and a commitment to equity, this initiative paves the way for a brighter future, where the streets are not just paths but symbols of connection and opportunity for all residents of Dublin.

## Project Scope

The planning phase of this project, which is the basis of this planning grant request, consists of the conceptual design and environmental screening for approximately 13.5 miles of roadway, drainage improvements, and pedestrian facilities, along with various corridor improvements throughout Dublin, Georgia. The tasks to be completed during the planning phase of this project include the following:

1. Feasibility Study
2. Bike-Pedestrian Study
3. Data Collection
4. Environmental Screening
5. Community Outreach
6. Conceptual Design (30%)
7. Economic Analysis



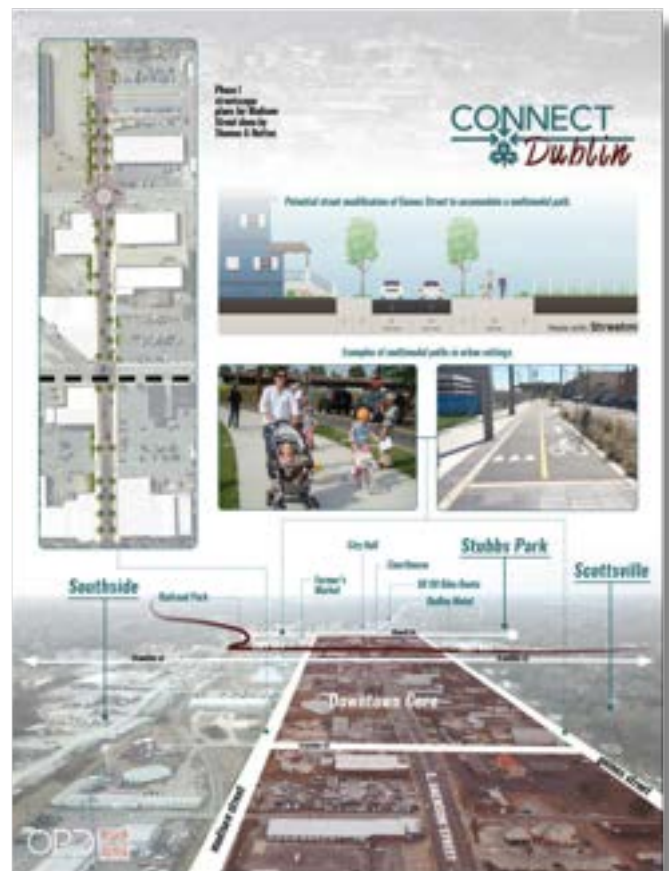
## Existing Conditions and Challenges:

The condition of the current street network linking Dublin's most disproportionately affected communities is subpar. Major local arteries and connector streets lack adequate pedestrian and bicycle infrastructure, with existing sidewalks often in disrepair or incomplete. Many road surfaces are aging and were not initially designed to address stormwater drainage issues, exacerbating the problem. These deficiencies have contributed to significant disinvestment in these neighborhoods over the past fifty years.

## Solutions:

Connect Dublin will incorporate the planning, design, and eventual implementation of street-specific pedestrian and bicycle infrastructure improvements, opening safe and more affordable transportation alternatives for underserved communities and improving the overall physical appearance of the neighborhoods. Proposed components of Connect Dublin include:

- **2-mile multimodal path to line the perimeter of downtown Dublin**
- **2.8-mile multimodal path along Franklin Street, a north-south local street, reconnecting isolated neighborhoods to community resources**
- **1.75-mile multimodal path along the Oconee River, offering a second north-south leg of the network dedicated for pedestrians and bicycles**
- **A network of improvement corridors offering street-specific infrastructure enhancements to provide safe connections to multimodal paths and essential goods and services and community resources along Franklin Street, the Oconee River, and around downtown.**



A concept developed through community design charette in January 2023.

## Project History

The City of Dublin is committed to reclaiming the vibrancy of its most distressed neighborhoods. Backed by years of comprehensive community planning in the areas of housing, economic development, and transportation, *Connect Dublin* is perfectly aligned with the city's ongoing redevelopment initiatives, already bringing investment to areas of severe distress.

Acknowledging the disproportionate impact on predominantly African American communities, particularly Scottsville, Southside, and Stubbs, the city has embraced a holistic approach to neighborhood revitalization, prioritizing health, safety, and the overall well-being of its residents.

At the core of Dublin's revitalization efforts are its citizens, local governments, elected officials, and community leaders—united in their commitment to delivering resources and opportunities to the most vulnerable neighborhoods. The City of Dublin has initiated a multifaceted approach to improving health and safety in Scottsville, Southside, and Stubbs, making it a top priority.

The communities impacted by this initiative are not just geographical locations; they are vibrant homes to caring, dedicated residents and grassroots organizations striving to revitalize their neighborhoods. These neighborhoods, characterized by small, interconnected city streets, were once home to a majority of working-class African American families. Over time, public housing became a significant part of the housing mix, accompanied by disinvestment, poverty, and crime. The expansion of U.S. Highway 80 and U.S. Highway 441 further isolated these neighborhoods, creating barriers to accessing essential goods and services.

Recognizing the static economy and slow decline of in-town neighborhoods, Dublin has employed a full menu of dynamic initiatives to spur redevelopment and provide innovative solutions to complex challenges.

These initiatives address housing, safety, and quality of life needs, slowly steering the city towards revitalization. Through strategic partnerships, smart public investment, and a commitment to community-driven change, the City of Dublin is scripting a story of transformation—one that honors the past, confronts present challenges, and lays the groundwork for a thriving, interconnected future.

## Ongoing Initiatives To Support Connect Dublin:

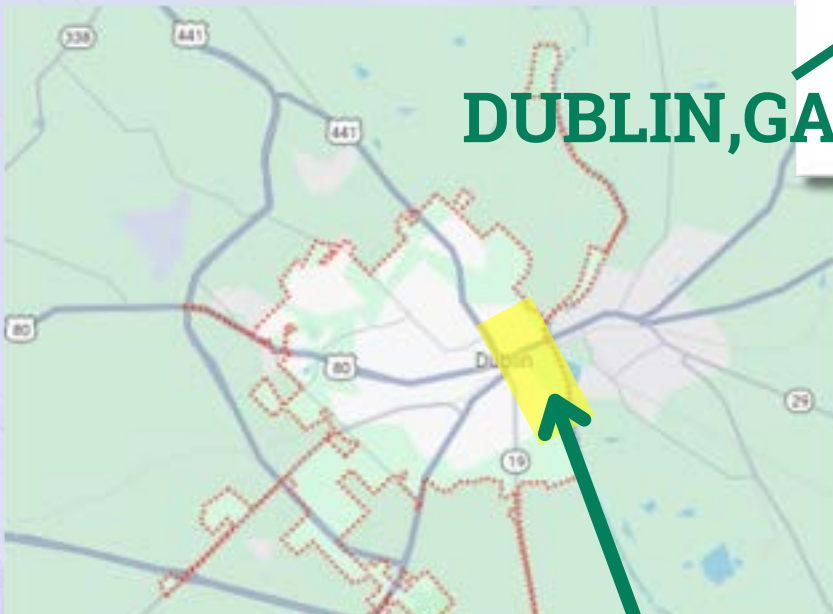
- [Urban Redevelopment Plan](#)
- [Housing Development Incentives Program](#)
- Dublin-Laurens Land Bank Authority
- Dilapidated Housing Initiative
- Blight Task Force and Blight Tax
- Community Housing Team (GICH Program)
- [Neighborhood Partnership Program](#)
- [Project Slow Zone Traffic Calming Program](#)
- [City Parks Master Plan](#)
- Katherine Gray Community Resource Center
- Relocation of City Utility Departments
- [Oconee Gym Renovation Project](#)
- RAD Conversion Dublin Housing Authority
- Zoning Reform
- [20-Year Comprehensive Plan Update](#)





## Project Location

The City of Dublin, situated in central Georgia along Interstate 16 between Atlanta and Savannah, serves as a vital commercial, medical, and recreational center for a rural 10-county region. With a population of 16,000 people, it plays a pivotal role in the surrounding communities.



**DUBLIN, GA**

The Connect Dublin project area spans from north to south along the Oconee River in the eastern part of the city. This area encompasses the historic neighborhoods of Scottsville, Southside, and Stubbs, all of which are adjacent to the downtown district. These neighborhoods are designated as the Urban Redevelopment Area by the City of Dublin and are identified as Areas of Persistent Poverty (2010 Census) and Historically Disadvantaged Communities (2020 Census).



**PROJECT AREA**

The northern terminus of the project is located at the intersection of North Franklin Street and Country Club Road, at U.S. Highway 441 North (32°33'34.8"N 82°54'50.7"W) and extends southward to the end of Charles W. Manning, Sr. Way at Oconee Park (32°31'36.6"N 82°53'33.3"W).



**2.8 mile Franklin St Multimodal Path**

**6.9 miles Corridor Improvements**

**1.75 mile Oconee River Multimodal Path**

**2 mile Downtown Perimeter Multimodal Path**



The proposed **Connect Dublin** project encompasses approximately 13.5 miles of city-owned roadway, drainage, and pedestrian facilities along with various corridor improvements throughout Dublin, Georgia. The City of Dublin requests **\$ 1,500,000** for the planning of this project which includes the development of conceptual designs, environmental screening, and benefit-cost analysis.

<b>CONNECT DUBLIN PROJECT BUDGET</b>	
<b>Task</b>	<b>Cost Estimate</b>
Feasibility Study	\$ 220,300
Bike-Pedestrian Study	\$ 111,200
Data Collection	\$ 174,100
Environmental Screening	\$ 129,400
Community Outreach	\$ 148,400
Conceptual Design	\$ 441,000
Economic Analysis	\$ 69,000
Contingency Items	\$ 141,000
Reimbursable Expenses (Consultant)	\$ 65,600
<b>TOTAL</b>	<b>\$ 1,500,000</b>

Cost basis provided by Thomas & Hutton Engineering.



## Scope of Work

### 1. Feasibility Study

This study will evaluate the feasibility and provide recommendations for improvements of different corridor improvement options and multimodal paths based on location, size, existing conditions, and right-of-way impacts.

### 2. Bike-Pedestrian Study

This study will evaluate the bicycle and pedestrian movements along the project corridors and use them to reinforce design aspects and make recommendations for the various corridor improvements included in the feasibility study.

### 3. Data Collection

Aerial photography and base mapping will be collected for use in preparing the conceptual plans and exhibits for the project.

### 4. Environmental Screening

To be conducted to identify environmental resources that should be considered and to comply with the National Environmental Policy Act (NEPA). Identification of Environmental Justice communities will also be conducted to identify underserved communities and ensure they will not be adversely impacted by future projects. To aid in the usefulness of the resources identified, a Geographic Information System (GIS)-based platform will be created, which can be used as an interactive tool and information resource.

### 5. Community Outreach

A robust plan for public outreach and engagement to include six (6) widely advertised in-person workshops, creation of a Community Ambassador Committee (CAC) to engage the public, and pop-up exhibits at three (3) currently planned civic events. A GIS-based social media page will also be launched with real-time information about proposed improvements and offer a way for the public to provide feedback.

### 6. Conceptual Design

30% conceptual designs will be prepared along with probable construction cost estimates for the entire project, as well as a conceptual right-of-way plan for each of the corridors based on the conceptual designs.

### 7. Economic Analysis

A Benefit Cost Analysis will be prepared following USDOT guidance for the project, which will evaluate the human, environmental, and monetary costs to determine if the return on investment for the project.



The cost estimate for this project is based on a certified cost proposal generated by Thomas & Hutton Engineering and provided to the City of Dublin in January 2024. The cost proposal is based on the use of contractual professional services, managed by the City of Dublin staff, to perform the work. The proposal and cost of individual tasks were reviewed by City of Dublin staff engineers and determined to align with industry standards in the State of Georgia.





## Project Funding

The City of Dublin is seeking 100% federal funding through the RAISE program, based on its rural designation of a population of less than 200,000. The 13.5-mile network of streets are all (100%) located in census tracts (9503, 9504, 9509) which are classified as Areas of Persistent Poverty and Historically Disadvantaged Communities. The City of Dublin is committed to implementing this project and is prepared to mitigate any cost overruns due to escalation or unknown factors.

Funding Source	Funding Amount	Total Funding
RAISE Funds	\$ 1,500,000	\$ 1,500,000
Other Federal Funds		
Non-Federal Funds		
<b>Total Project Cost</b>	<b>\$ 1,500,000</b>	<b>\$ 1,500,000</b>

## Funding By Census Tract

2020 Census Tract	% of Project In Tract	Project Costs Per Census Tract
9503	50%	\$ 750,000
9504	10%	\$ 150,000
9509	40%	\$ 600,000
<b>Total</b>	<b>100%</b>	<b>\$ 1,500,000</b>



## Disadvantaged Census Tracts from CEJIST (2010 Census

The Connect Dublin project area encompasses three census tracts - 9503, 9504, 9509. All impacted census tracts are categorized as Historically Disadvantaged Communities (and Areas of Persistent Poverty), meaning 100% of requested funding would impact these tracts.

2010 Census Tract	Project Costs Per Census Tract
9503	\$ 750,000
9504	\$ 150,000
9509	\$ 600,000
<b>Total Project Cost</b>	<b>\$ 1,500,000</b>



## Urban/Rural

The City of Dublin is classified as rural, located outside of a 2020 Census-designated urban area. 100% of the grant funding request of \$1,500,000 is for a rural community.

<b>Urban</b> (2020 Census-designated urban area with a population greater than 200,000)	
<b>Rural</b> (Located <u>outside</u> of a 2020 Census-designated urban area with a population greater than 200,000)	\$ 1,500,000
<b>Total Project Cost</b>	<b>\$ 1,500,000</b>



## a | SAFETY

### Challenge: Unsafe Pedestrian and Bicycle Infrastructure and High Injury Rate in Underserved Areas

Ensuring the safety of non-motorized travelers is crucial for the success of this project, aligning with the City of Dublin's broader efforts to strengthen neighborhoods and the implementation of Project Slow Zone, a city-wide neighborhood traffic calming program.

From 2013 to 2023, the City of Dublin Police Department recorded 111 pedestrian and bicycle versus automobile crashes. 45 of those crashes occurred in the project area.

Of those 111 total crashes, there were 84 pedestrian and bicycle injuries and two fatalities. Within the project's target areas - Scottsville, Southside, and Stubbs - there were 41 injuries and one fatality.

In 2022, Project Slow Zone was launched to implement traffic calming measures, focusing on safer streets and reduced vehicle speeds, especially in residential and pedestrian-heavy areas. Utilizing the five Es of traffic calming - Evaluation, Education, Encouragement, Engineering, and Enforcement - Dublin has worked to lower speed limits, install speed cushions, implement road diets, and create dedicated bicycle lanes.

### Solution: Redesign and Upgrade Network of Streets Serving Underserved Communities

The project proposes to continue these efforts by applying context-sensitive design to address safety challenges at the street level, ensuring a safer network of streets. By creating alternative transportation corridors for active mobility and incorporating design elements that protect pedestrians, cyclists, and others, this project aims to directly enhance resident safety and reduce injury and fatality risks in underserved communities. (As prescribed by the National Roadway Safety Strategy plan.)



45

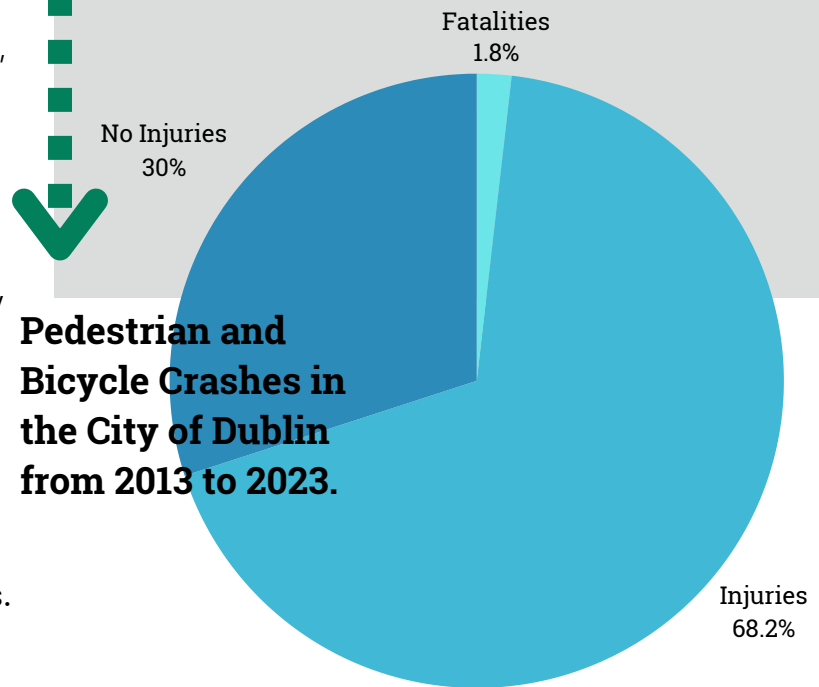
pedestrian & bicycle crashes in the project area over 10 years.

41%

of all pedestrian & bicycle **crashes** in the City of Dublin over 10 years **occurred within the project area.**

49%

of all pedestrian & bicycle **injuries** in the City of Dublin over 10 years **occurred within the project area.**



**Pedestrian and Bicycle Crashes in the City of Dublin from 2013 to 2023.**



## b | ENVIRONMENTAL SUSTAINABILITY

**Challenge: Auto-centric design of city creates high reliance on cars and increased air and water pollution.**

One of the primary goals the *Connect Dublin* project is to improve transportation access for cyclists and pedestrians, reducing greenhouse gas emissions. This initiative aims to improve environmental outcomes for accessing essential services and recreational activities through active mobility, reducing reliance on motor vehicles, particularly among underserved residents who often face financial burdens associated with car ownership.

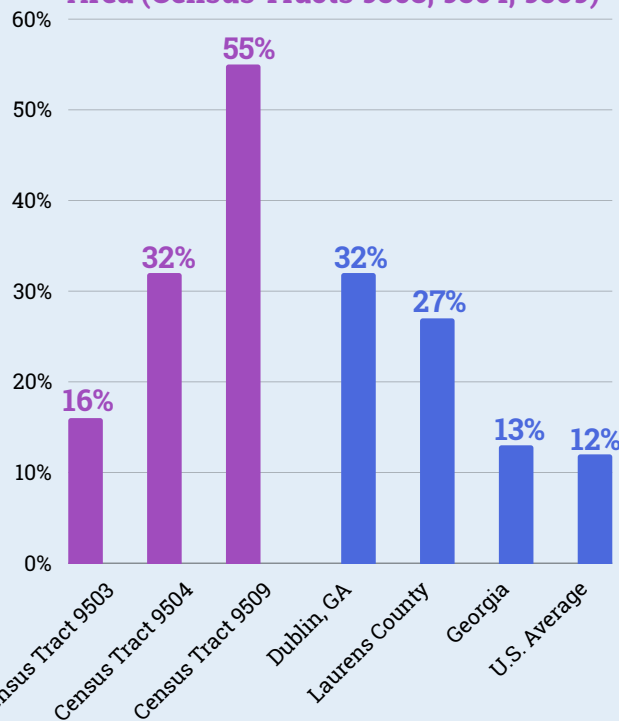
The auto-centric design of towns across the U.S. has deepened the chasm of inequity for our black communities, and Dublin is no exception. *Connect Dublin* specifically targets areas that suffer from the negative impacts of expanding highway infrastructure, such as neighborhood division, increased reliance on cars, and increased pollution.

**Solution: Expand transportation alternatives for active mobility to reduce pollution, reduce car dependency, and reduce automobile cost burden on underserved communities.**

The design and construction of multimodal paths and streetscape improvements will provide environmentally sustainable and less cost-burdensome access to everyday needs.



Poverty Rate in Connect Dublin Project Area (Census Tracts 9503, 9504, 9509)



\$32,000

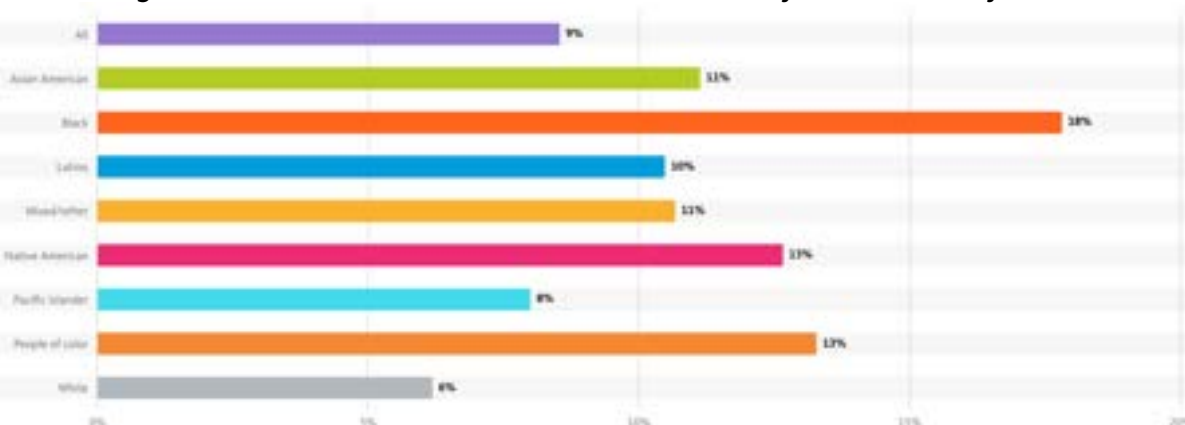
Median Household Income Dublin, GA

\$11,000

Average Annual Cost to Own a New Vehicle in Georgia



Percentage of households without access to a vehicle by race/ethnicity in the U.S.



18% of Black households in the U.S. lack access to a vehicle. The population of Connect Dublin project area is made up of over 80% Black residents (2020 Census).



## b | ENVIRONMENTAL SUSTAINABILITY (contd.)

**Challenge: Aging and inadequate stormwater drainage issues disproportionately impact underserved communities in the project area.**

The inadequate design and aging condition of the stormwater system in the Connect Dublin project area significantly impacts the way underserved residents can navigate their neighborhood and adjoining commercial areas during times of moderate to heavy rain.

**Solution: Address drainage issues in underserved communities upgrading infrastructure with innovative, green, and resilient design and materials.**

In addition to transportation improvements, *Connect Dublin* will tackle long-standing stormwater drainage issues. By designing solutions that enhance infrastructure resilience to future climate and weather risks, the project aims to protect waterways like the Oconee River and its tributaries.

The City of Dublin, recognized by the Arbor Day Foundation and Georgia Forestry Commission as a Tree City USA for 24 consecutive years, prioritizes tree conservation and planting citywide. This effort supports stormwater management, improves air quality, and provides shaded areas for pedestrians. As part of a mayoral initiative, the city is currently in the process of planting 1,000 trees, working to expand the tree canopy along the city's street network to improve stormwater drainage and the pedestrian experience. Planning efforts for Connect Dublin will incorporate the use of street trees and green islands within the project area, advancing this initiative and the environmental sustainability of the project.



**Street in Scottsville flooded due to poor drainage**



**Pedestrians walking in poorly designed streets**



**Damage to personal property because of poor stormwater drainage**



**Volunteers from the Mayor's Tree Board join City Public Works planting trees.**





## c | QUALITY OF LIFE

**Challenge:** The current condition of Dublin's street network in underserved areas significantly diminishes residents' quality of life.

Through planning and implementation, *Connect Dublin* can generate transformative benefits for the community's overall health and well-being.

**Solution:** Address quality of life challenges comprehensively through thoughtful and careful planning, offering community-based solutions centered around transportation alternatives.

Connect Dublin is poised to address these challenges by:

1. Expanding **affordable transportation options** for low-income residents by developing a network of multimodal paths and safe street infrastructure, reducing reliance on costly vehicle transportation.

2. Increasing **equitable alternative transportation** access to employment, services, resources, and recreation in underserved areas.

3. Developing **new multimodal facilities and greenway trails** to reconnect communities disproportionately affected by highway expansion.

4. Promoting **active mobility in areas with predominantly African American populations**, who face higher risks of cardiovascular disease, diabetes, kidney disease, and cancer, according to the Georgia Department of Public Health, thus improving citizens' physical and mental health.

5. Enhancing **pedestrian and bicycle connections to the city's park system**, slated for \$30 million in capital improvements over the next decade, according to the 2024 City of Dublin Parks Master Plan.

6. Fostering **opportunities for small businesses, affordable housing, and mixed-use development** in areas lacking public or private investment for the past six decades, thus expanding the city's successful revitalization efforts beyond the historic business district.





## d | MOBILITY AND COMMUNITY CONNECTIVITY

### **Challenge: Disjointed and inadequate mobility infrastructure in underserved communities.**

Neighborhoods within the Connect Dublin project area have seen severe disinvestment, resulting in disconnected sidewalks and unsafe intersection crossings for pedestrians and bicyclists.

### **Solution: Plan and execute a network of multimodal paths, sidewalks, and trails to tackle connectivity issues by eliminating physical barriers, designing user-centered infrastructure, and integrating solutions accessible to everyone, regardless of age, size, or disability.**

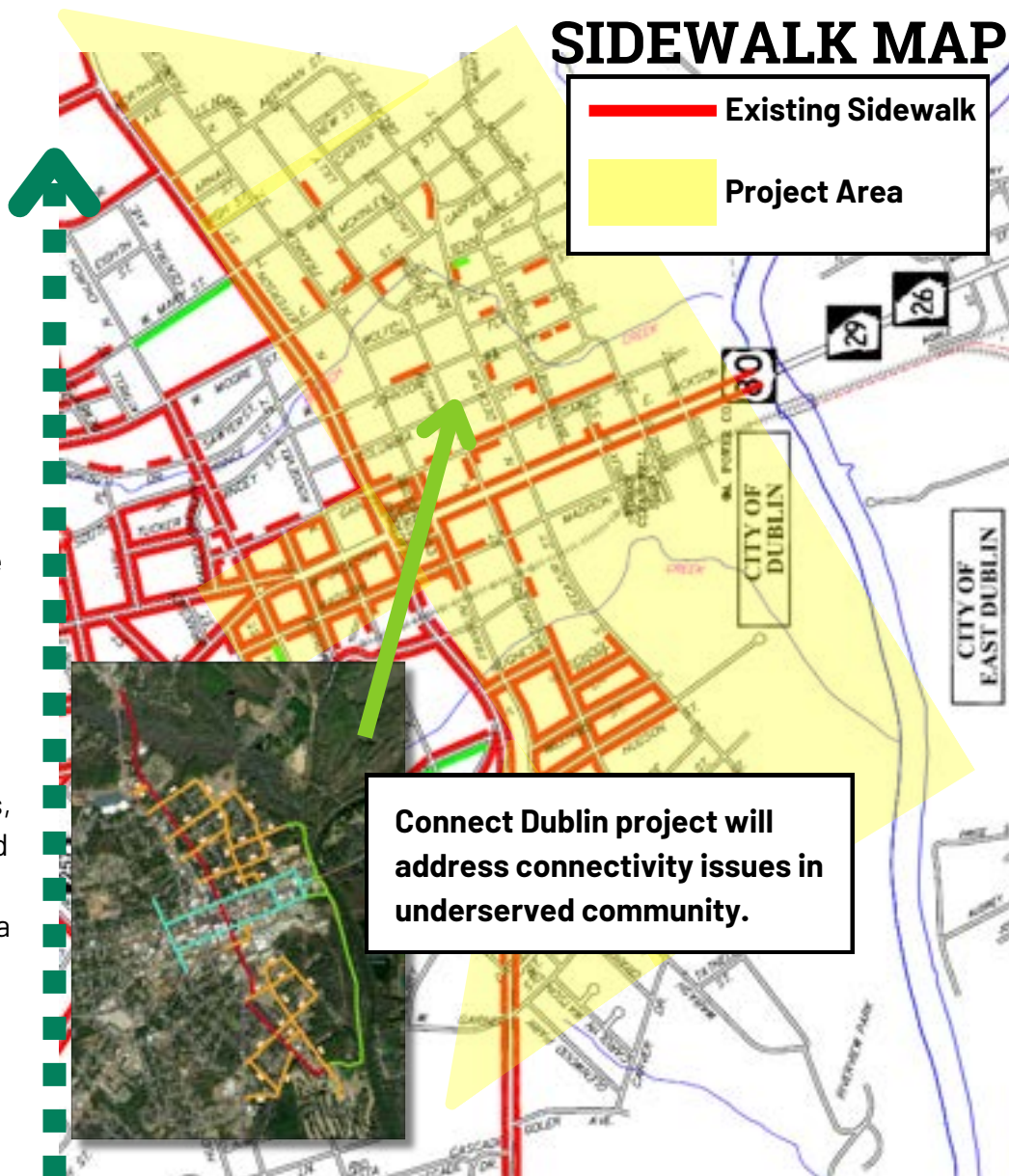
Studies show that walkable cities offer a multitude of economic, environmental, and social benefits. Dublin aspires to be a walkable city and has expanded its sidewalk network by 30% over the past two decades.

Transportation infrastructure enhancements like *Connect Dublin* are essential for advancing these objectives. However, such initiatives are among the most costly to undertake, underscoring the importance of a comprehensive planning process to ensure Dublin maximizes its public investment.

While Dublin has implemented sidewalks and complete street improvements along main corridors, particularly near state highways and main arteries, underserved communities within the project area contend with numerous broken sidewalk connections, creating unsafe conditions for walking or biking throughout the city.



A resident of Southside neighborhood has no choice but to travel in street with motorized wheelchair.





## e | ECONOMIC COMPETITIVENESS AND OPPORTUNITY

### **Challenge: Heightened economic struggle for rural, underserved communities.**

Dublin, much like other communities across Georgia and the United States, grapples with economic challenges typical of rural areas, including housing, workforce, connectivity, and economic stagnation. However, what sets Dublin apart is its proactive approach to these challenges through collaboration with local and state partners, with a commitment to fostering economic prosperity for the entire community. The City of Dublin has a proven track record of attracting private investment through strategic planning, prudent public spending, and leveraging a wide array of economic tools at the local, state, and federal levels to encourage revitalization and new development.

Strategically located along Interstate 16, Dublin sits 120 miles west of the Port of Savannah, the fourth busiest port in North America. Serving as an economic hub for a 10-county region with approximately 250,000 people, Dublin experiences a significant increase in daytime population, swelling from 16,000 to over 60,000. Its convenient access to the Savannah Port and Atlanta has attracted new industries, supported by a robust, industry-focused economic development program.

Through a strong partnership with the Georgia Department of Economic Development, Dublin has emerged as a prime location for the EV automotive supply industry, particularly in support of a new Hyundai EV plant under construction 90 miles east in Bryan County. Recently, Dublin secured an EV parts manufacturer, promising 450 jobs within three years, with ongoing efforts to attract another industry potentially generating 1,200 new jobs.

However, while this industry growth is positive, the anticipated population increase exacerbates transportation challenges in underserved communities, widening financial disparities and hindering employment access.

### **Solution: Cultivate economic prosperity for underserved communities and minority entrepreneurs through economic development and transportation alternatives for workforce.**

Dublin has achieved significant success in revitalizing its economy, particularly in its historic downtown. Over the past 15 years, the city has witnessed \$55 million in combined private and public investment, fostering a network of locally owned businesses, creating hundreds of jobs, and developing 33 residential units. This revitalization was gradual, with careful public investment guiding private contributions, turning downtown Dublin into a statewide tourist destination.

The revitalization momentum is extending into surrounding historic neighborhoods like Scottsville, Southside, and Stubbs, where the city has intensified its focus on small business support, housing redevelopment, and neighborhood safety to improve quality of life and employment opportunities. Strategies such as local housing incentives, investment in community facilities and green spaces, and utilizing redevelopment powers have kickstarted revitalization efforts in vulnerable neighborhoods. Historically, these communities boasted micro-commercial nodes that housed flourishing black-owned neighborhood businesses. **With the planning and execution of the Connect Dublin project, Dublin's economic development efforts in these areas will receive a substantial boost, facilitating opportunities to uplift minority-owned small businesses and foster greater economic prospects for historically disadvantaged areas.**





# f | STATE OF GOOD REPAIR

**Challenge:** The network of city streets within the Connect Dublin project area is in poor condition. Despite annual efforts to repave streets using available state and local funding, many road surfaces were constructed using outdated methods and are now deteriorating. Additionally, existing sidewalks are often disconnected and lack modern accessibility features.

**Solution:** Through planning for multimodal paths and streetscape design, *Connect Dublin* aims to restore and modernize existing aging infrastructure.

Prioritizing infrastructure improvements within the city's core positions Dublin well to increase community wealth along existing corridors. Rather than burdening taxpayers with additional roadway construction and maintenance costs, enhancing the in-town street network enables the city to drive redevelopment and infill development where infrastructure already exists.

The project areas impacted by Connect Dublin – Scottsville, Southside, and Stubbs – comprise the city's oldest neighborhoods with the least modernized infrastructure. These areas, located near the Oconee River, also face significant stormwater drainage issues due to their age and proximity to the water. Planning and implementing Connect Dublin will enable the city to upgrade stormwater facilities along city streets and replace failing pipes, mitigating damage to private and public property.

Through the planning and eventual implementation of Connect Dublin, the City of Dublin will evaluate and address the maintenance needs of the new infrastructure and proactively plan for ongoing maintenance.



42%

of city streets located within the project area were graded **Fair to Poor Condition** in an annual street condition survey conducted by the City of Dublin Engineering Department. Only 18% were rated Excellent.



# g | PARTNERSHIP AND COLLABORATION

**Challenge:** The success of Connect Dublin requires significant collaboration and ensuring underserved voices are heard.

The City of Dublin prides itself on fostering strong partnerships, recognizing that collaboration amplifies its impact despite limited resources. Through close cooperation with the County, the School System, development agencies, non-profits, and grassroots citizen groups, the city consistently implements projects and programs aimed at enhancing the lives of its residents.

**Solution:** Leverage existing strong community partnerships to broaden the impact of Connect Dublin.

With the Connect Dublin project, Dublin will collaborate closely with the Dublin Housing Authority and Dublin-Laurens Land Bank Authority to create new housing opportunities along the street network. The Georgia Department of Transportation will serve as a crucial partner in addressing transportation connections along highways. And, in partnership with its Downtown Development Authority, the city will develop initiatives to support minority

small business growth, ensuring a diverse range of goods and services while fostering local entrepreneurship and access to workforce.

**The most vital partnership lies between the City of Dublin and its residents,** particularly those in

Scottsville, Southside, and Stubbs. During a recent stakeholder input session for the city's comprehensive plan update, one resident expressed, "the City of Dublin has a listening ear and is always open to feedback from its residents." Through active community engagement and public input opportunities, the community plays a pivotal role in shaping the city's initiatives.

Both the community and the City of Dublin acknowledge the societal challenges these neighborhoods have faced over the years. Together, citizens, elected officials, city staff, and business leaders are fully committed to providing the resources these areas deserve. Dublin is prepared to launch a comprehensive approach to delivering these resources, with a primary goal of building partnerships to improve the health and safety in its most vulnerable communities.





## h | INNOVATION

**Challenge:** The complexity of the Connect Dublin project will require innovative solutions to provide needed resources in underserved communities.

**Solution:** City's first network of multimodal paths providing safe pedestrian and bicycle passage between neighborhoods and downtown, culminating from years of planning and preparation.

Connect Dublin aims to pioneer the development of the city's first multimodal paths and greenway trail along the Oconee River, facilitating safe passage between neighborhoods separated by federal highway infrastructure and broadening community connectivity.

This initiative represents the culmination of various planning efforts undertaken by the city over the past decade, including those for the Oconee Riverwalk and Bike Trail Plan, Downtown Dublin Revitalization Plan, City Parks Master Plan, Project Slow Zone Traffic Calming Plan, and Sidewalk Expansion Plan, among others. By integrating insights from these diverse planning endeavors, Connect Dublin endeavors to comprehensively address challenges and incorporate solutions, leveraging historical knowledge of the project areas and meeting the broader needs of the city as a whole.

**Solution:** Innovative and robust community outreach plan for project delivery.

The City of Dublin is committed to implementing a dynamic and forward-thinking public engagement program throughout the planning stages of this project. To ensure widespread participation and diverse input, the city will employ the following innovative strategies:

**1. Community Ambassador Team:** Establishing a dedicated team of community ambassadors who will serve as liaisons between residents and the project planners. These ambassadors will engage with community members, gather feedback, and facilitate dialogue to ensure that a broad spectrum of perspectives is represented.





## h | INNOVATION (contd.)

**2. Hands-on Workshops:** Organizing interactive workshops directly in the project area, where residents can participate in hands-on activities, design charrettes, and collaborative brainstorming sessions. These workshops will provide residents with the opportunity to actively contribute their ideas and preferences for the project.

**3. Pop-Up Exhibits at Community Festivals:** Hosting pop-up exhibits and information booths at community festivals, events, and gatherings. These exhibits will showcase project plans, visualizations, and interactive displays to engage attendees and solicit feedback in a festive and welcoming atmosphere.

**4. GIS-Based Social Media:** Leveraging Geographic Information System (GIS) technology and social media platforms to create interactive maps, surveys, and virtual engagement tools. This approach will allow residents to provide input and share their insights online, making participation more accessible and convenient.

By implementing these innovative public engagement strategies, the City of Dublin will meet residents where they are, foster meaningful dialogue, and ensure that community input informs every step of the planning process for this project.

### **Solution: Maximize the impact of the project by leveraging local resources.**

The City of Dublin has a proven track record of maximizing the impact of every local public investment dollar. Through a combination of a robust grants program, public-private partnerships, and strategic project prioritization, Dublin effectively leverages and optimizes the use of local funds for various projects.

This grant application presents another opportunity for Dublin to demonstrate its commitment to maximizing project benefits financially while mitigating any associated risks. By leveraging external funding sources and employing sound project management practices, Dublin aims to ensure the efficient and effective implementation of the proposed project.





The City of Dublin stands ready to initiate the Connect Dublin project upon grant award notification. The Mayor and City Council, as well as the City Manager and executive staff members are prepared to support and carry out this project to successful completion. The following activities were completed in preparation to implement this project:

1. Completed a comprehensive assessment of all existing plans and historical data that impact the project area by key city staff including the City Manager, City Engineers, and City Planner (January 2023).
2. Conducted a three-day design charette with community input session to better define the project area and components (January 2023).
3. Requested and received approval to move forward with project and seek grant funding from the Mayor and City Council (March 2023).
4. Engaged professional engineering services to provide a complete and comprehensive cost estimate for the project (September 2023).
5. Completed city-wide street pavement condition survey (2023).

## Technical Capacity Assessment

The City of Dublin has a proven track record of success in planning for and delivering capital projects on time and on budget. Using local, state, and federal funding, the City of Dublin has successfully leveraged tens of millions of dollars in private investment in the last decade alone.

### Recent examples of successful project implementation utilizing federal and state funding include:

Project	Funding Source	Amount	Project Status
Hwy 257 Water Utility Extension	2015 EDA Grant	\$ 1,300,000	Complete, Compliant
Dublin Industrial Park Sewer Improvement	2020 EDA	\$ 2,620,000 (\$ 5,480,400 Local Match)	Ongoing, On Schedule, Compliant
COVID RECOVERY	2020 ARPA	\$ 5,930,542	Obligated, Compliant
Joiner Street Stormwater Improvements	2015 CDBG	\$ 500,000 (\$ 358,237 Local Match)	Complete, Compliant



**Federal and state funding experience contd.**

Project	Funding Source	Amount	Project Status
Marcus Street Stormwater Improvements	2016 CDBG	\$ 500,000 (\$ 490,000 Local Match)	Complete Compliant
Housing Redevelopment Scottsville & Southside	2017 CDBG	\$ 710,000	Complete, Compliant
Housing Redevelopment Scottsville & Southside	2018 CDBG	\$ 545,000	Complete Compliant
Madison Street Redevelopment Project	2022 Rural Downtown Grant (GA DCA)	\$ 3,300,000 (\$ 396,000 Local Match)	Obligated, Compliant
Dublin Police Department Crime Reduction Program	2023 SLFRF Public Safety	\$ 1,200,000	Ongoing, On Schedule, Compliant
Oconee Gym Renovation Project	2023 SLFRF Improving Neighborhood Outcomes	\$ 2,200,000 (\$ 1,000,000 Local Match)	Ongoing, On Schedule, Compliant



Madison Street Redevelopment Project Ongoing



**Recent examples of successful transportation project implementation include:**

Project	Purpose	Funding Source	Amount	Project Status
Hillcrest Parkway Improvement Project	four miles of local arterial roadway, including sidewalks and pedestrian improvements	TSPLOST	\$ 17,000,000	Complete 2022, Compliant
Stubbs Park Transportation Project	transportation improvements around Stubbs Park including sidewalks, multimodal paths, and two traffic circles	TSPLOST	\$ 3,500,000	Complete 2023, Compliant
Hwy 80/ East Jackson St Pedestrian Improvements	design of pedestrian and streetscape improvements along 0.5 miles of state highway located along a gateway from the Oconee River into downtown	GDOT Transportation Alternative Program	\$,400,000	Ongoing, Compliant
Annual Street Resurfacing Project	asphalt resurfacing of city streets	LMIG/ Local Match	\$, 300,000 - \$ 700,000 Annually	Complete through 2023, Compliant

Stubbs Park Transportation Project Completed 2023





## Federal Compliance

The operation of the City of Dublin and the implementation of capital projects is and will remain compliant with federal regulations including but not limited to Title VI, Americans with Disabilities Act, Davis Bacon Act, and Build America, Buy America Act. The City of Dublin underwent and completed a Title VI and ADA audit, agreement update, and transition plan (ADA) with the Georgia Department of Transportation in 2023 and was found to be in compliance.



## City of Dublin Certifications and Accolades

Certified **PlanFirst Community** through the Georgia Department of Community Affairs. The City of Dublin has maintained designation since 2016, proving excellence in project planning and implementation;

Certified **Main Street America City** (1989). The City of Dublin garnered \$55 million in public and private investment in downtown since 2007;

Recipient of a **Certificate of Achievement for Excellence in Financial Reporting** from the Government Finance Officers Association for its continued commitment to demonstrating a "spirit of full disclosure." (2024, awarded annually);

Certified **Georgia Initiative for Community Housing (GICH) Alumni** through the Georgia Department of Community Affairs;

**Certified Local Government** through Georgia Department of Community Affairs Historic Preservation Division;

**Qualified Local Government** through Georgia Department of Community Affairs, indicating compliance with all state regulations for municipal corporations

Designated **Tree City USA** for 24 consecutive years by The Arbor Day Foundation and Georgia Forestry Commission.



## Project Schedule

### Fall 2024

- Obligate RAISE Funds
- Procure and engage a third party consultant to perform the planning tasks.
- Initiate project team meetings

### Winter 2025

- Project kick-off (develop project vision, webpage, social media, ambassador team, public engagement plan)
- Begin study considerations (feasibility, planning, environmental)
- Initial public engagement, community survey

### Spring 2025

- Begin Data Collection
- Begin Feasibility, Bike-Ped studies
- Stakeholder engagement (residents, property owners, business owners, interest focus groups)
- Begin Environmental Screening

### Summer 2025

- Continue public engagement (hands-on workshop and pop-up exhibits at civic events)
- Pop-up exhibits
- Begin Conceptual Design

### Fall 2025

- Continue public engagement through GIS-based social media engagement
- Review and adjust conceptual design

### Winter 2026

- Continue public engagement program and solicit input on the initial conceptual design
- Begin Cost Benefit Analysis

### Spring 2026

- Review draft deliverables and conceptual design with the consultant
- Community open house to review design

### Summer 2026

- Complete Environmental Screening
- Finalize all deliverables and conceptual design with the consultant
- Presentation to community
- City Council adoption