



PROJECT

SLOW ZONE

NEIGHBORHOOD TRAFFIC CALMING PLAN

**CITY OF DUBLIN
ENGINEERING & PLANNING
DEPARTMENTS**

April 2023

CITY OF DUBLIN PRIORITIES

**STRONG
NEIGHBORHOODS**

The City of Dublin will create and sustain strong neighborhoods that are safe, beautiful, clean, walkable, and connected. We will accomplish this by prioritizing safety, beautification, parks, traffic calming, blight elimination, and housing redevelopment.

**TRAFFIC
CALMING**

**QUALITY
GROWTH**

The City of Dublin will prioritize growth through careful planning and guiding the sustainable development of our city in a way that promotes the health, safety, and quality of life for our residents while building wealth in our core. We will accomplish this through improved development and zoning codes and policies that protect character areas and foster physically attractive growth and supporting our existing industry and businesses and compatible new businesses and industries.

**SOUND
GOVERNANCE**

The City of Dublin, through sound financial stewardship, will provide for the public's safety, reliable city services, and maintain efficient transportation and utility infrastructure. We will accomplish this through sound planning, striving for transparency, being responsive to citizens, and supporting our employees with the tools and training needed to be effective and efficient in their jobs.

WHAT IS TRAFFIC CALMING?

Traffic calming consists of physical design and other measures put in place on existing streets to reduce vehicle speeds and improve safety for pedestrians and cyclists.

Institute of Transportation Engineers

WE WILL USE THE 5 E'S:

Education
Encouragement
Evaluation
Engineering
Enforcment



PROJECT SLOW ZONE GOALS

ADDRESS residential safety and livability concerns through the collaboration of neighborhoods and city leadership and staff.

SUPPORT growth in a way that can protect neighborhoods from the negative impacts of traffic by implementing innovative and effective transportation solutions.

OBJECTIVES

ENCOURAGE positive driver behavior.

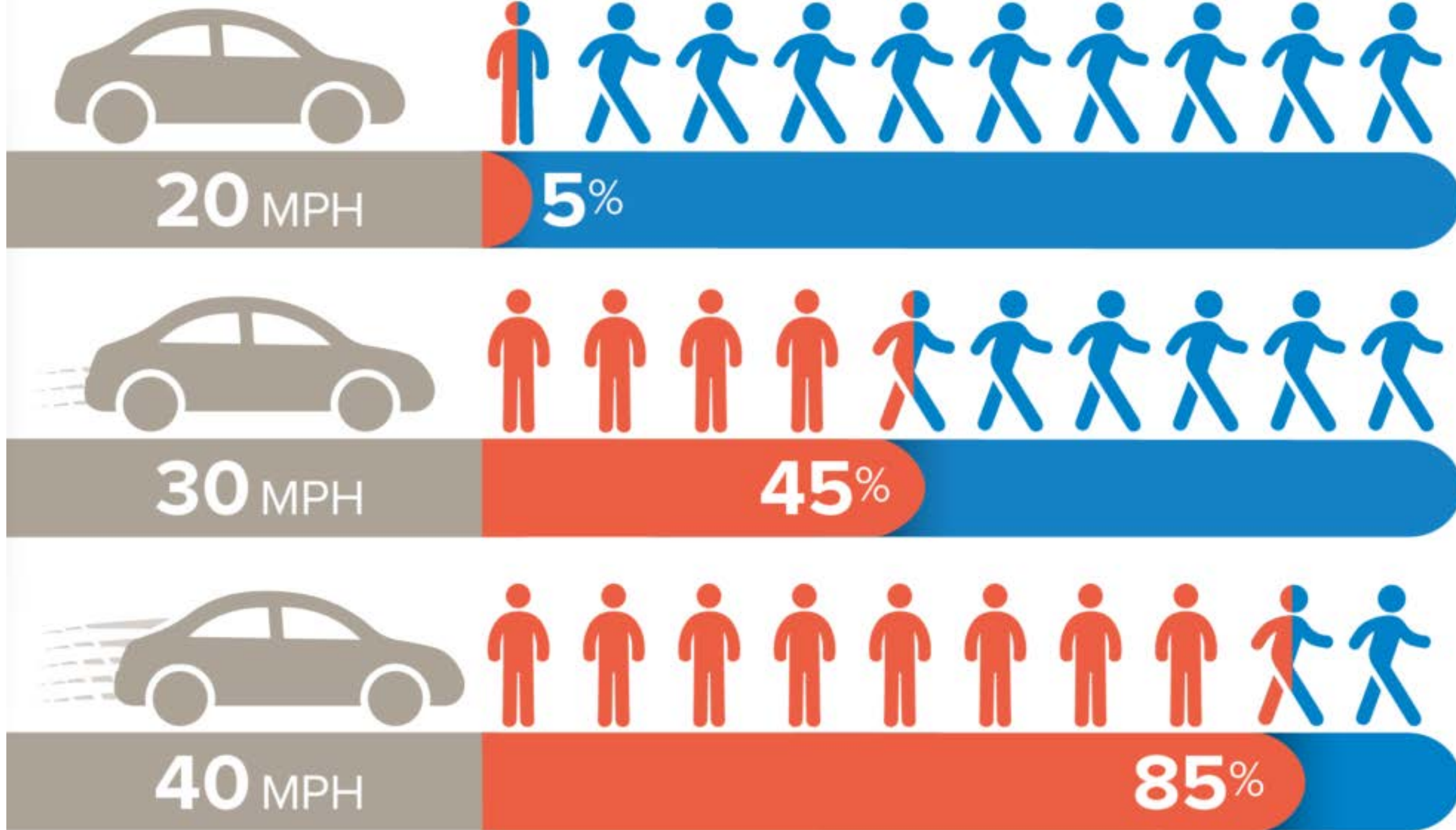
IMPROVE neighborhood livability.

REDUCE speeds on residential streets without reducing safety.

DEVELOP traffic calming plans that meet the needs of the residents and property owners.

If hit by a car traveling:

● Fatality ● Person survives collision



National Traffic Safety Board (2017) Reducing Speeding-Related Crashes Involving Passenger Vehicles. Available from: <https://www.nts.gov/safety/safety-studies/Documents/SS1701.pdf>

TOOLS FOR TRAFFIC CALMING

SIGNAGE

MINI ROUNDABOUTS

SHOULDER STRIPING

CHICANES

SPEED CUSHIONS

DIVERTERS

SPEED TABLES

MEDIANS

ROAD CLOSURE

RAISED CROSSWALKS

Note: Stop signs and traffic signals are examples of traffic control, not traffic calming, and will need to follow engineering protocol outside of the City's Neighborhood Traffic Calming Program.



CYCLE 1 - PROJECT SLOW ZONE

Stonewall Street from Calhoun to Kellam

Coney Street from Bellevue to Marion

Highland Avenue from Pine Forest to Lancaster

Woodrow Avenue from Pine Forest to Lancaster

Kersey Lane/ Stewart Avenue from Telfair to Saxon

Goler Avenue from MLK to Carver

Roberts Street from Marcus to Academy

Earlwood Drive from Veterans to Walke Dairy

RECOMMENDATIONS

Launch Project Slow Zone as a City-wide Initiative

Launch website form for Traffic Calming Requests

Lower maximum speed in neighborhoods to 25 mph

Branded neighborhood signage

Speed Cushions

Temporary Road Closures

Public Art

Engagement through Social Media
and Surveys



Location	Total	85th % (MPH)
Stonewall (Calhoun-Coney)	541	38.1
Stonewall (Coney-Lancaster)	887	40.5
Stonewall (Lancaster-Kellam)	659	38



LANCASTER TO CALHOUN
STONEWALL STREET

133 VEHICLES TRAVELING FASTER THAN 40 MPH DURING A 24 HOUR PERIOD



KELLAM TO LANCASTER
STONEWALL STREET



Location	Count	85th% (MPH)
Coney (Bellevue-Stonewall)	901	35.7
Coney (Stonewall-Marion)	1065	35.6



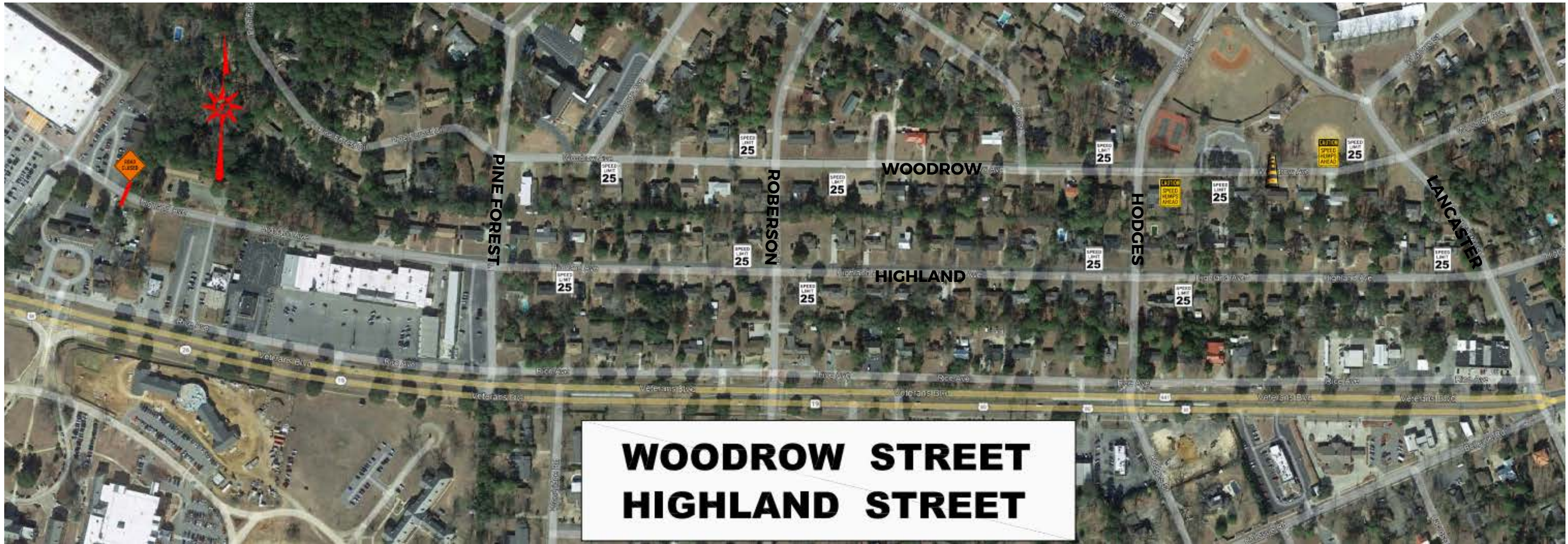
RECOMMENDATIONS

STONEWALL STREET (CALHOUN TO KELLAM)

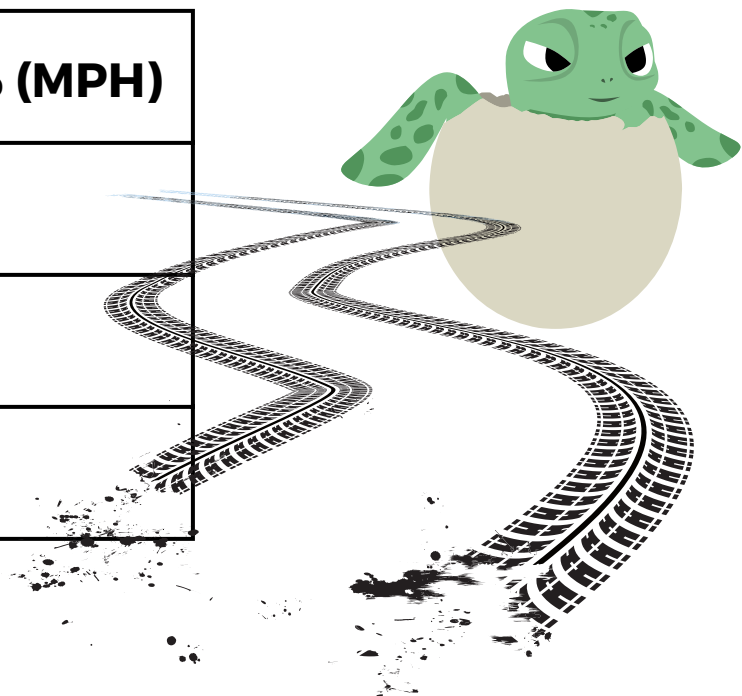
CONEY STREET (BELLEVUE TO MARION)

- Lower speed limit to 25 mph and post signs
- Install speed cushions
 - Stonewall - three speed cushions
 - One each between Calhoun and Coney; Coney and Lancaster; and Lancaster and Kellam
 - Coney - two speed cushions
 - One each between Bellevue and Stonewall; and Stonewall and Marion
- Install neighborhood branded signage below speed limit signs
- Paint crosswalks at all intersections, as well as stop bars and stop ahead
- Install asphalt mural at intersection of Stonewall and Coney





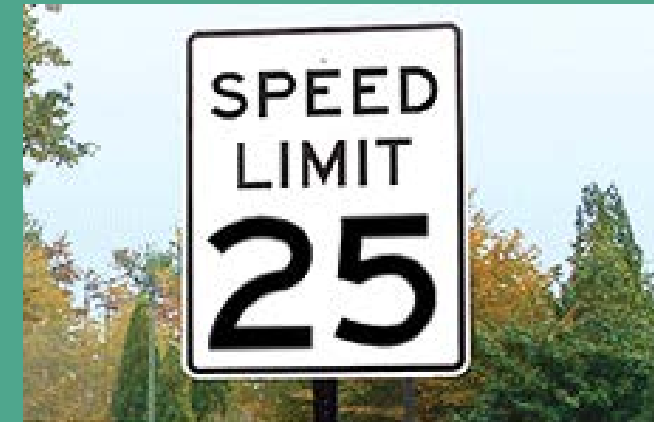
Location	Count	85th% (MPH)
Woodrow (Pine Forest-Roberson)	289	31.4
Woodrow (Roberson-Hodges)	268	36
Woodrow (Hodges-Lancaster)	929	35.4



Location	Count	85th% (MPH)
Highland (Home Depot-Pine Forest)	2520	34.6
Highland (Pine Forest-Roberson)	2056	37.3
Highland (Roberson- Hodges)	1878	36.6
Highland (Hodges-Lancaster)	1286	37.8

HIGHLAND AVENUE (PINE FOREST TO LANCASTER) WOODROW AVENUE (PINE FOREST TO LANCASTER)

- Close Highland Avenue at west end connection to commercial area (Home Depot)
 - Temporary road closure to assess effectiveness
 - Cul-de-sac if determined road should remain closed permanently
- Lower speed limit to 25 mph and post signs
- Install speed cushion on Woodrow between Lancaster and Hodges
- Install neighborhood branded signage below speed limit signs





Location	Count	85th% (MPH)
910 Kersey Lane (at curve)	696	26.8
515 Hudson Drive	485	36.5

KERSEY LANE

Location	Count	85th% (MPH)
Goler	260	32.9

GOLER AVENUE



19

HWY 19/GLENWOOD/MLK BLVD Glenwood Ave

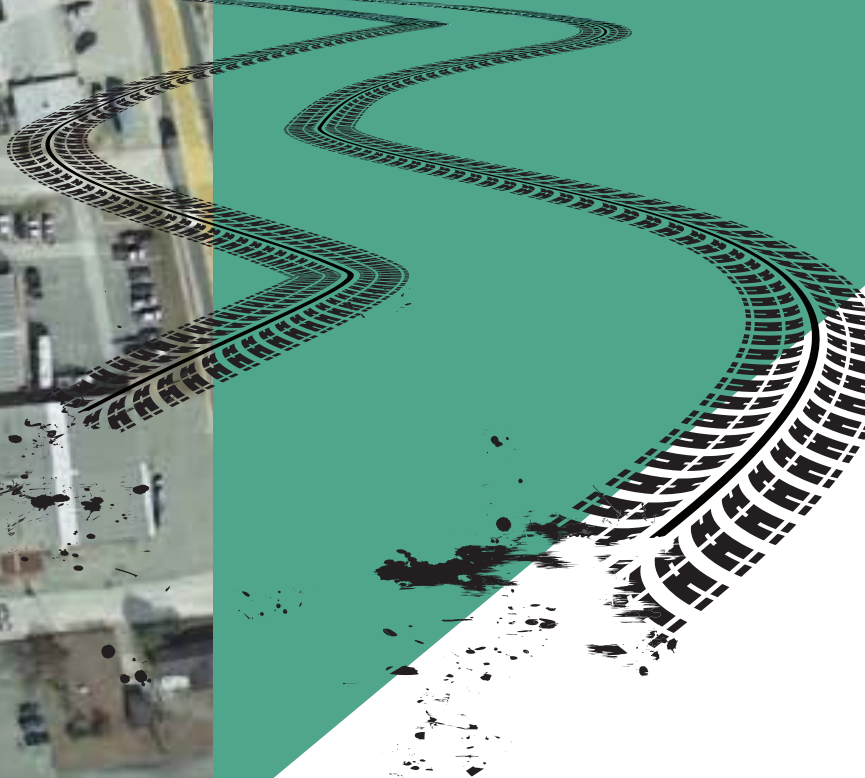
SPEED LIMIT 25

SPEED LIMIT 25



Location	Count	85th% (MPH)
Roberts St.	390	36.3

ROBERTS STREET



KERSEY LANE

- Temporary road closure at the curve where Kersey transitions to Stewart Avenue
- Restudy 30 days
- Cul-de-sac if close road permanently



GOLER AVENUE (MLK TO CARVER)

- Lower speed limit to 25 mph
- Install neighborhood branded signage
- Restudy in 30 days

ROBERTS AVENUE (MARCUS TO ACADEMY)

- Lower speed limit to 25 mph
- Install neighborhood branded signage
- Install one speed cushion between Marcus and Academy



EARLWOOD DRIVE

- Average 230 per day, 31 MPH 85%
- Received petition and request from residents for intervention
- Temporary road closure at the Veterans Blvd end



CITY OF DUBLIN

RESIDENTIAL TRAFFIC INTERVENTION PROCESS



PROCEDURE FOR ROAD CLOSURE STUDY:

[TAKES PLACE AT STEP 4 OF RESIDENTIAL TRAFFIC INTERVENTIONS]

1. Perform traffic study prior to temporary closure
2. 30-day public notice before temporary closure – social media, letters, and signage at site
3. 60-day temporary closure
4. Collect feedback/community input day 45-60
5. Staff recommend action – i.e. permanent closure or alternative intervention (Ref: Step 5-7 of traffic intervention flowchart)
6. If approved, implement permanent closure or alternative intervention as recommended





NEXT STEPS

- LAUNCH PROJECT SLOW ZONE (WEBSITE, MEDIA)
- APPROVAL TO IMPLEMENT CYCLE 1
- IMPLEMENTATION TO BEGIN IN JUNE 2023